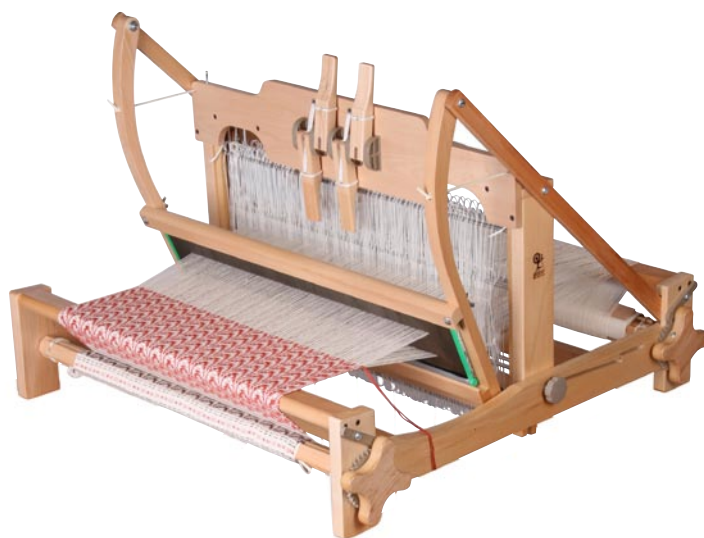


table loom 4 shaft

weaving looms | product codes FS410N, FS610N, FS800N

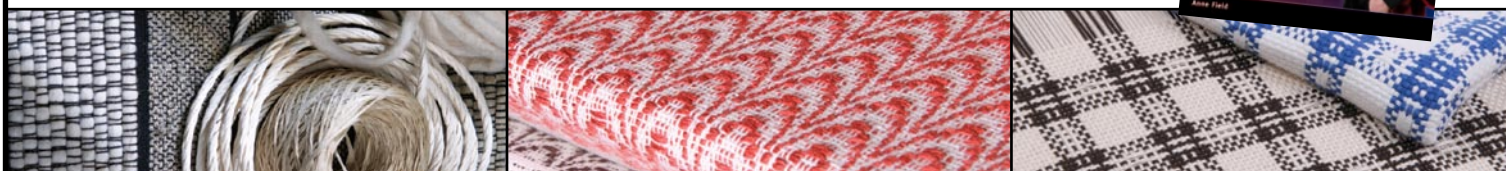
Popular because they are portable, easy to use and so versatile, the Ashford table looms are in demand with both beginner and experienced weavers. Choose from 3 weaving widths.

The four shaft looms fold flat, even with your weaving in place, making them ideal for taking to workshops or guild meetings. The overhead beater, with automatic bounce back, gives a wonderful shed and even beating. Levers are within easy reach for comfortable weaving. Each shaft can be lifted simply and quickly and is independent enabling a wide variety of patterns to be woven. The solid Silver Beech hard wood is lacquered for long-lasting good looks. Non-slip rubber feet give extra stability. Swedish stainless steel reed and lightweight Texsol heddles are included. Plus there is a wide range of options and accessories available.



Ashford Book of Weaving for the Four Shaft Loom - by Anne Field

Anne Field has recently updated her classic weaving book. The Ashford Book of Weaving for the Four Shaft Loom is a 175 page, full colour inspirational and informative text. Written specifically for this popular loom this comprehensive book covers planning a warp, pattern drafting, weaving techniques and fourteen innovative projects.



Models

- FS410N (16ins)
- FS610N (24ins)
- FS810N (32ins)

Specifications

Stainless Steel Reed	10dpi (40/10cm)
Weaving Width	40cm (16ins) 60cm (24ins) 80cm (32ins)
Weight From	8kg (17lbs)
Timber	Lacquered Silver Beech hardwood

Included accessories

- Swedish Texsol heddles
40cm (16ins) - 320 heddles
60cm (24ins) - 480 heddles
80cm (32ins) - 640 heddles
- Swedish stainless steel reed 10DPI (40/10cm)
- Warping tools - Cross and warp sticks, reed and heddle hooks
- Shuttles – two
- Learn to weave on the Table loom booklet

Optional accessories available

- Raddle kit – for all sizes
- Loom stand and treadle kit – for direct tie-up

- Stainless steel reeds – for all types of yarn 6, 8, 10, 12, 16 dpi (24, 32, 40, 48, 64/10cm)
- Second back beam – for keeping perfect tension with different fibres
- Plus 4 later kit – to convert a 4 shaft loom to an 8 shaft
- Stick and boat shuttles
- Bobbin winders
- Hobby Bench – adjustable height seat with storage
- Ashford Teak Wax - protect and restore the wood



Ashford Book of Projects for the Eight Shaft Loom
By Elsa Krogh
Projects and techniques including summer and winter and modern backed weaves on the eight shaft.

Spinning and Weaving the Ashford way DVD or Video. Assembly, spinning, plying, carding, warping and weaving.



Ashford Handicrafts Limited
415 West Street, Ashburton, New Zealand
Telephone +64 3 308 9087 Facsimile +64 3 308 8664
Email: sales@ashford.co.nz Internet: www.ashford.co.nz

ashford
WHEELS & LOOMS