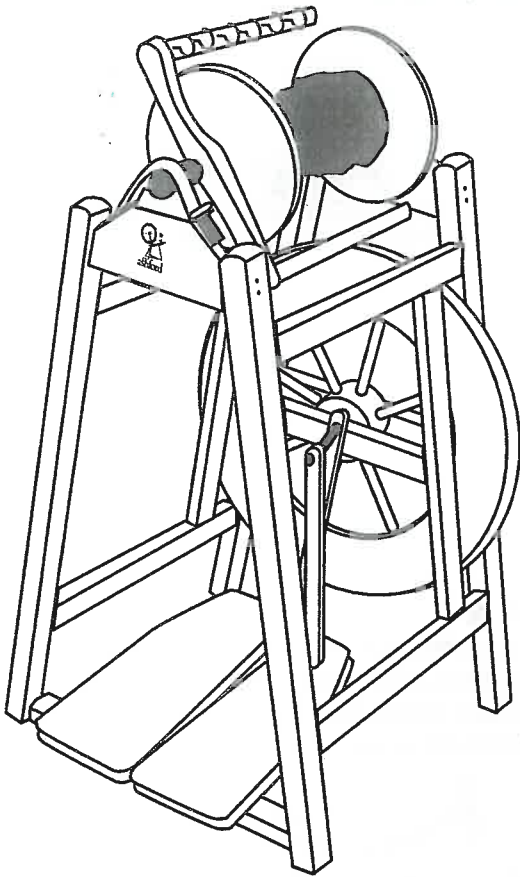


Assembly Instructions for the

ASHFORD COUNTRY SPINNER DOUBLE TREADLE KIT



Tools Required: Screwdriver, ⊕ and —, Hammer, Candle Wax, Ashford Spinning Wheel Oil

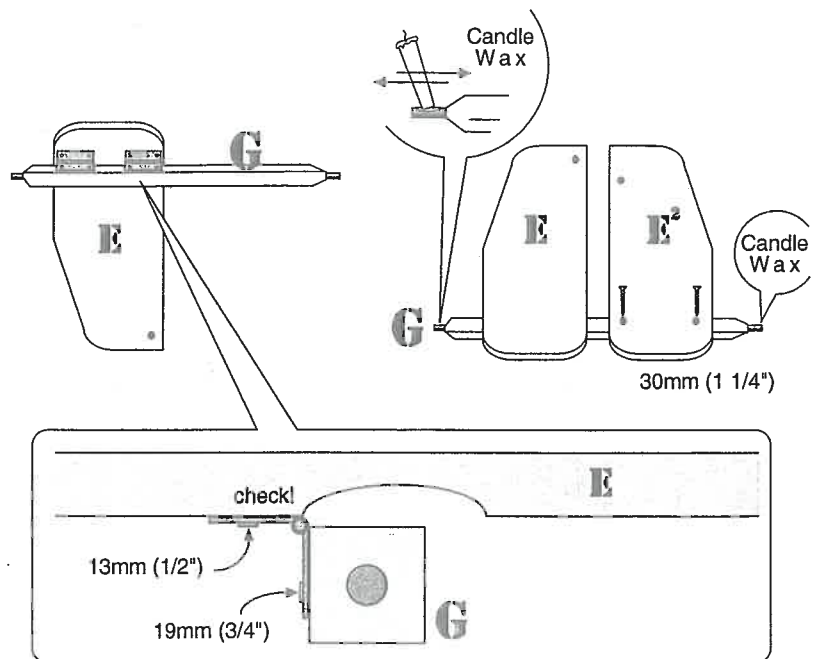
Before Commencing - Read assembly instructions completely, identify the parts and note the assembly sequence. Candle wax rubbed on all screws will make assembly easier.

Finishing the Wood - We recommend that the wood surfaces be waxed before assembly. This protects the kiln dried wood from climatic changes and enhances the beauty of the wood.

For the Ultimate Finish - Use the special, natural, new formula Ashford Wax Finish. The Silver Beech Tree is a native of New Zealand and has a lovely variety of colour and grain. The Ashford Wax Finish will enhance the natural colours and beauty of the wood. Ashford Spinning Wheels are also available factory finished in clear lacquer.

STEP 1

Secure 2 Hinges to treadle rail G with 19mm (3/4") Screws, and use 13mm (1/2") Screws to secure left treadle board E to Hinges. Then secure right treadle board E² to treadle rail G with 30mm (1 1/4") Screws.



STEP 2

Prise the dome caps from the ends of the existing treadle rail with a screwdriver and remove the E clip from the crank.

STEP 3

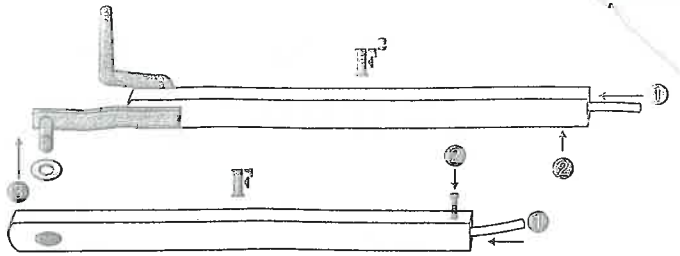
Loosen all screws on both sides of the frame. Then remove the single treadle assembly.

STEP 4

Fit the new double treadle assembly between the front legs and retighten all screws.

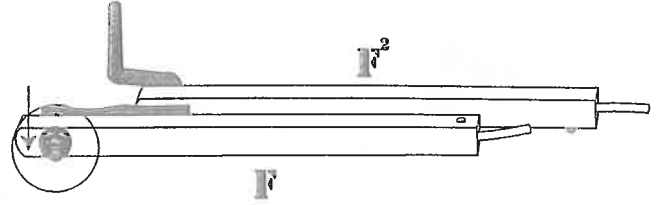
STEP 5

Secure one flexible joint into the bottom of each con rod **F** and **F²** with 16mm (5/8") pan head screw. Put the nylon washer onto the crank, and then place the con rod **F** on the crank with the bearing facing out, and secure with the **E clip** (to remove, prize off with a screwdriver).



STEP 6

Use the nail provided to tap the pin out of the hub and then remove the crank.



STEP 7

Check that the drive band is around the wheel. Then push the new double treadle crank through the frame and wheel.

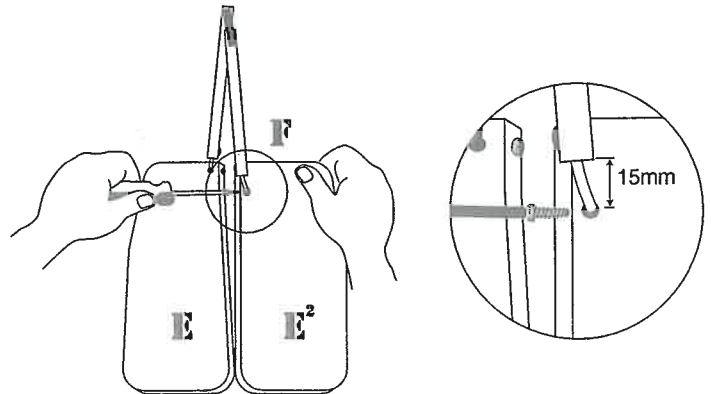
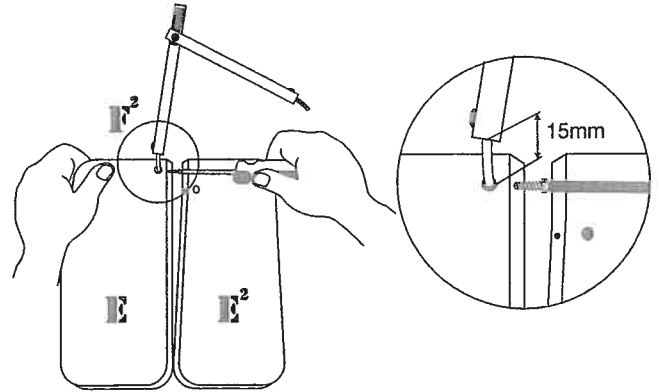
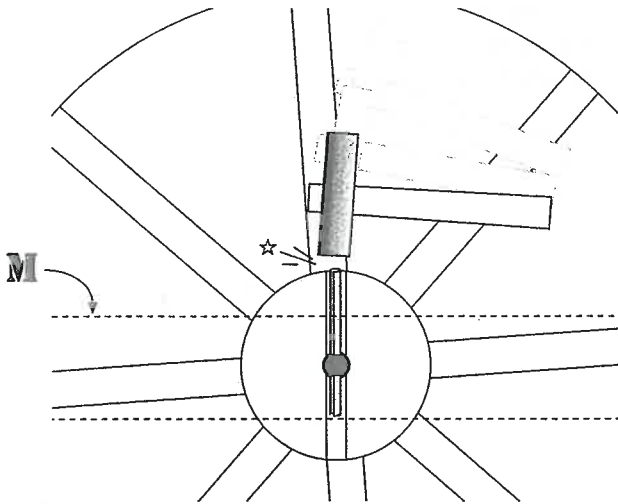


Line up the hole in the crank and slot in the hub with the nail provided. Remove the nail and carefully tap in the tension pin.



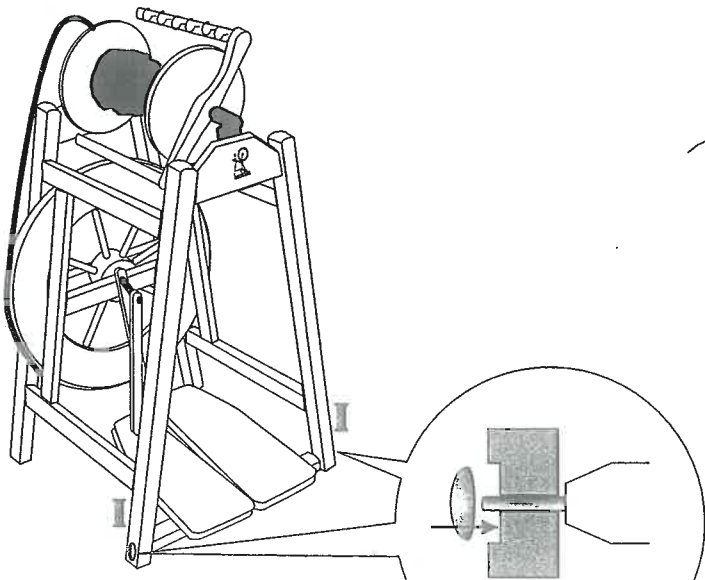
STEP 8

Attach each flexible joint to the treadle boards using a 19mm (3/4") pan head screw. Leave approximate 15mm (5/8") gap between the con rod and treadle board.



STEP 9

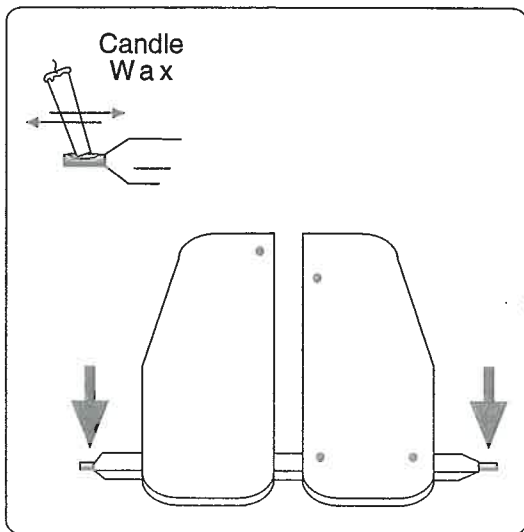
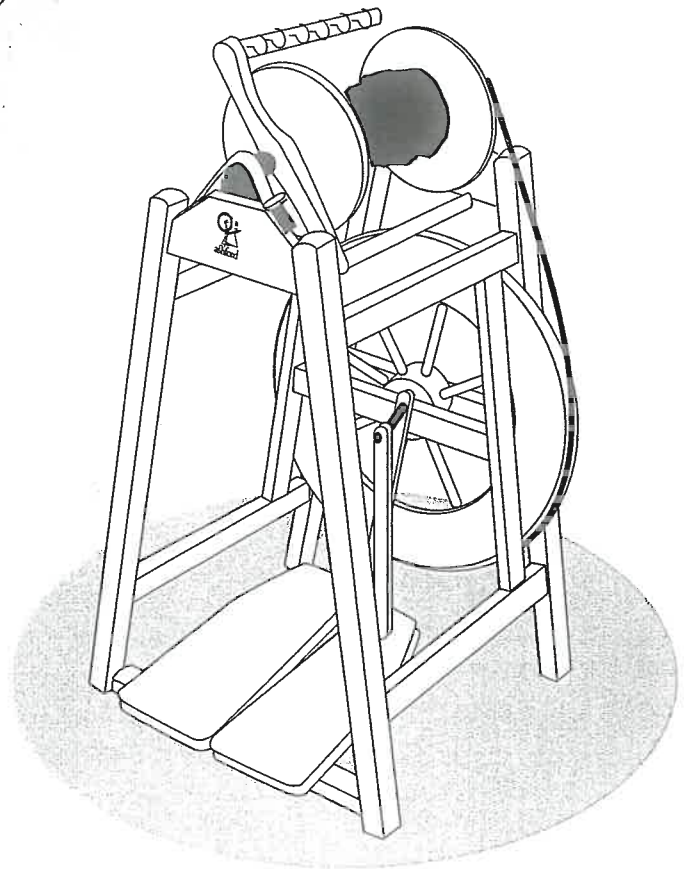
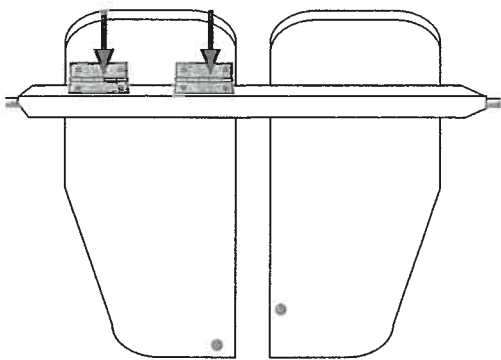
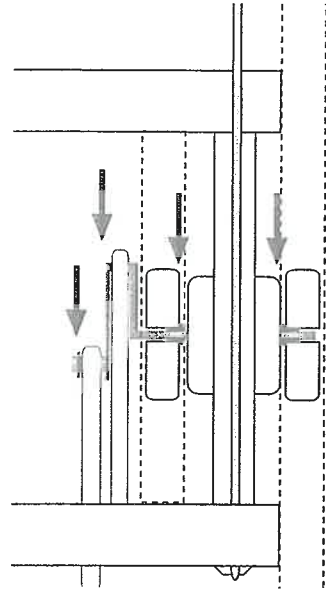
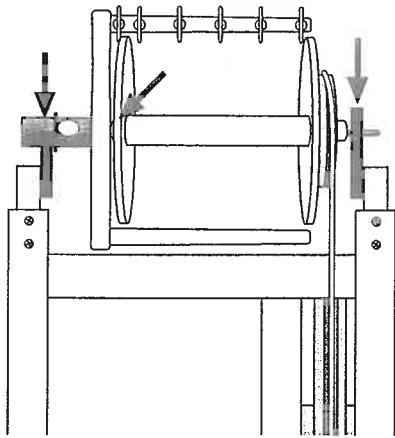
Push the dome caps onto the steel treadle pins protruding through legs I.



PLEASE NOTE

**Remove the band from the bobbin whorl when not in use to avoid stretching.*

**Oil all bearings regularly for silent effortless spinning. We recommend Ashford spinning wheel oil for this purpose.*



415 West Street, PO Box 474, Ashburton, New Zealand
Tel (64-03) 308 9087 Fax (64-03) 308 8664