

## ASSEMBLY INSTRUCTIONS FOR YOUR PEACOCK SPINNING WHEEL

---

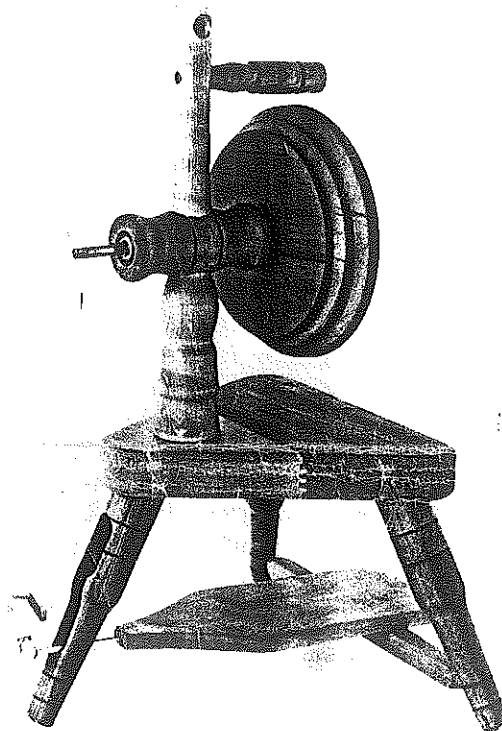
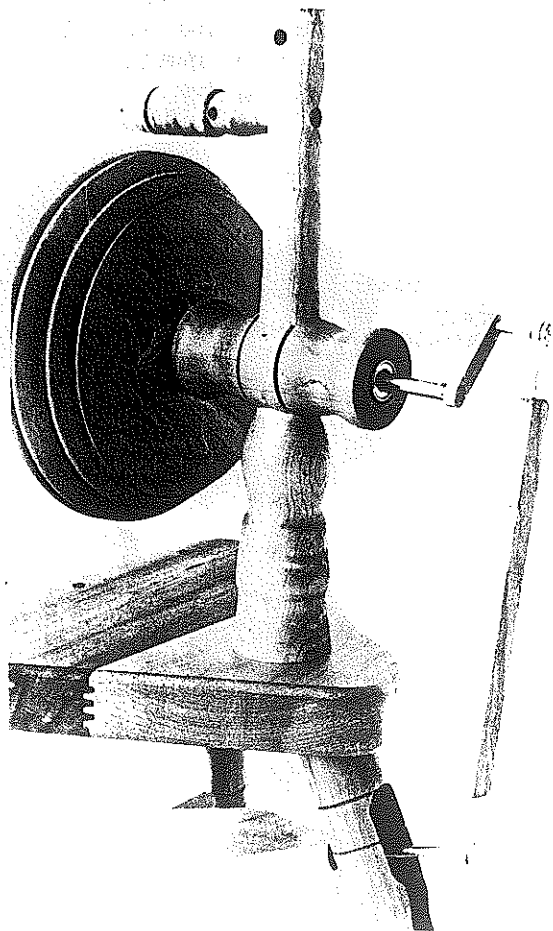
If you follow our simple instructions it will take you only a few minutes to put your Peacock Spinning Wheel together. Please read the instructions carefully before commencing.

Note: The finish on the native Silver Beech hardwood is Danish Oil. As the oil will soak into the wood to protect it, further coats of a similar Scandinavian type oil may be applied.

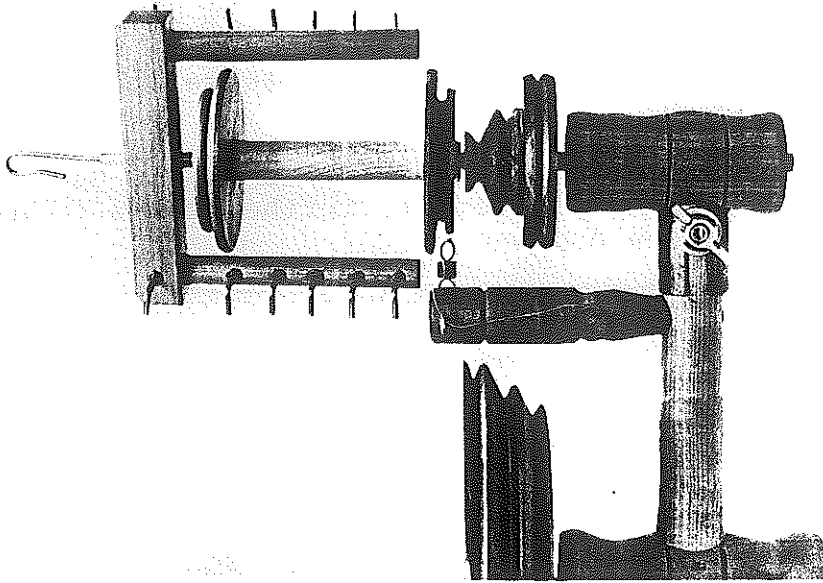
---

### ASSEMBLY:

Step 1. Locate the main upright into the base and secure with a washer and wingnut from underneath. Check that the wheel is parallel with the front of the base.



Step 2. Thread the brass crank onto the end of the main shaft. Tighten firmly and check the crank is in a "3 o'clock" position. The counterweight in the wheel will offset the weight of the treadle and permit a convenient start to spinning.



Step 3. Thread the cup hooks into the flyer arms. A little candlewax on the threads will make this easier.

Step 4. Place a bobbin on the flyer shaft then thread on the flyer. A smear of vaseline or drop of light oil will ensure the bobbins revolve freely.

Step 5. Locate the flyer head in the lowest position onto the main upright and secure with a washer and wingnut. Note - there is vertical adjustment to tighten the drivebelt as necessary.

Step 6. Thread a cup hook into either side of the horizontal dowel.

Step 7. Thread the nylon line through the tension knob and tie a knot. Attach the tension spring to the other end of the line.

Step 8. Hook the tension spring onto the left hand cup hook, pass the nylon over the bobbin end, under the other cup hook and locate the tension knob into position.

Step 9. Place the drive belt around the wheel and flyer whorl. Avoid stretching the belt. Note - the 3 steps in the wheel and whorl. The slowest flyer speed is obtained with the drive belt on the small wheel groove and large flyer whorl. Faster speeds are obtained by moving the belt onto the larger wheel grooves. Use a slower flyer speed for thicker yarns and faster flyer speed for finer yarns.

Step 10. Locate the 3 bobbin storage pins into the front of the base and place the bobbins in position.

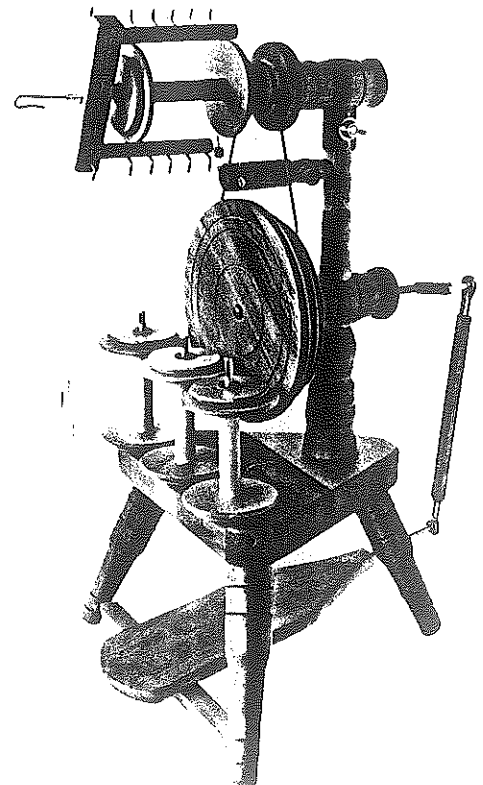
Step 11. The pins may also be located in the edge of the base and used to ply from (see photograph on next page).

---

### SPINNING ON YOUR PEACOCK SPINNING WHEEL

Tie a piece of yarn (a leader) to the bobbin, about 3m (3') long, pass it around the flyer hooks and through the twister hook. The end of the twister hook should point away from the flyer hooks (the hooks on the opposite side are for dynamic balancing).

Commence treading clockwise and allow your prepared fibres to join onto the leader.



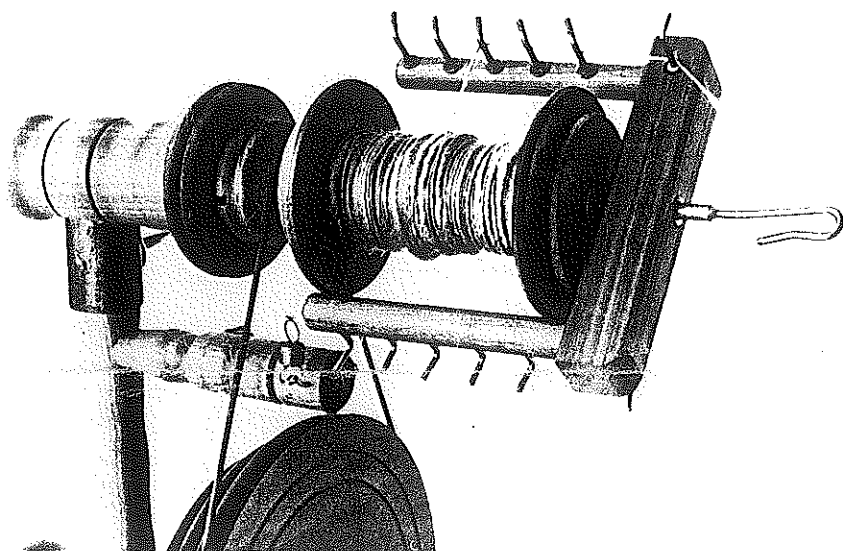
If there is too much tension on the brake band, the yarn will pull in too quickly or break.

If there is insufficient brake tension, the yarn will not be pulled onto the bobbin.

Move the yarn along the flyer hooks regularly to ensure the yarn fills the bobbin evenly.

Ply two or three single yarns together by treading anti-clockwise.

Lubrication - oil or vaseline should occasionally be applied to the flyer shaft, connecting rod ball joints and treadle pins. The flyer and main shaft run on sealed-for-life ball bearings and do not need lubricating.



Manufactured for:

Peacock Spinning Wheels Ltd  
P O Box 42088  
Orakei, Auckland 5  
NEW ZEALAND

