

# Learn to felt

Needle felting



**aShford**  
WHEELS & LOOMS

spinning | weaving | carding | felting | knitting | dyeing

# NEEDLE FELTING

These instructions are designed to guide you through the basic techniques of needle felting. Once mastered, you can add your own unique style to your project.

Before you start your project, you might like to experiment with a small piece of sliver.

This beginners project will make a basic flower.

Many 3D forms can be made by starting with some basic shapes, for example: a cylinder, fold or rolled ball.

## Materials

25gms of Ashford Corriedale sliver - 6 colours

1 Felting needle 36 gauge

*Needle felting foam not included in kit*

For more advanced techniques and 11 projects refer to “The Ashford Book of Needle Felting” by Barbara Allen.

01



**The flower base:** Take a 20cm length for the base colour, wrap firmly around 2 fingers to form a circular wad of sliver (wrapping firmly will reduce your felting time).

02



Remove your fingers. Needle the sliver a few times to stop it from unrolling. Continue working the sliver into a circular form, needling around the centre leaving the outer edge unfelted.

03



**The petals:** Using the tip of the needle fold in the sliver to a petal shape and needle to hold. Keep pulling in any sliver that strays outside your petal shape.





04

Turn over, working the reverse side as well. Needle repeatedly, continuing to shape the petals, you will see the wool sliver gradually felt down.



05

To thicken up your base and petals, wrap a small amount of sliver over your petal, needle to hold. Repeat over each petal using the patten as a guide. Continue working the needle around the base and petals.



06

To firm up the edges hold the base of the flower between your thumb and forefingers and **carefully** jiggle the needle in and out, working right around the edges. **Tip:** Trim with scissors once finished to remove any wispy fibres.



07

**The centre:** When you are happy with the shape and thickness of the base, start the middle circle. Pull off a small piece of wool and form a rough circle shape on your foam. On top of the sliver place a coin.

08



Make a dent with your felting needle around the outside of the coin. Remove the coin and fold any stray fibres into the middle of the circle while working the needle in the centre.

09



Turn the disc over and felt the other side continuing to pull in any stray fibres. Work the needle on an angle trying not to push the needle too far through as this pushes the fibres out the opposite side.

10



Needle the disc onto the centre of the flower.

11



Create the top disc using a smaller coin. Repeat steps 9 and 10.

*Happy Felting!*



## Needle Felting Kits

### Beginner Kits

Includes fibre, felting needle and step-by-step instructions. Choose flowers, bugs, rooster. *\*Needle felting foam not included.*

### Needle Felting Starter Kit

Includes book, needles, fibre, foam and water soluble fabric.



### Needle Felting Kits

Choose from our New Zealand wildlife series - Kiwi, Penguins, Pukeko, Seal and Tui or make an adorable beagle, 3 beautiful butterfly brooches, iconic sheep, cute panda or sleepy owl. Create your own handmade pure wool festive ornaments and decorations.



*Kits include everything you need.*



## Needle Felting Tools

Needle felting is a quick and easy way to felt fibre without soap or water.

### Felting Needles

Available in packs of 10. 6 gauges to choose from.



### Needle Felting Punch Student



### Needle Felting Foam

### Needle Felting Punch



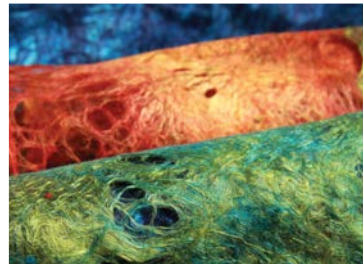
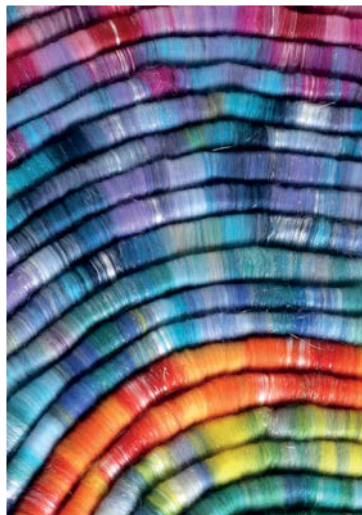
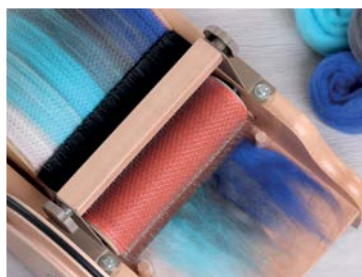
## Corriedale 100gm Packs

Convenient seven colour packs of our popular 30 micron Corriedale sliver pre-packaged in 100gm bags. Available in 10 colour collections.

Perfect for all fibre crafts – needle felting, wet felting, spinning, blending or carding.



To view the full range of felting kits, carders, fibres and textile equipment visit [www.ashford.co.nz](http://www.ashford.co.nz)



Ashford Handicrafts Limited  
 415 West Street, PO Box 474, Ashburton, New Zealand  
 Ph +64 3 308 9087 sales@ashford.co.nz www.ashford.co.nz

**ashford**  
 WHEELS & LOOMS