

BOAT SHUTTLE BOBBIN WINDER

Wooden

Before Commencing

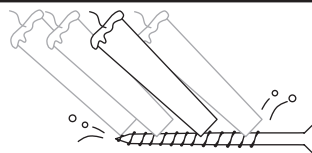
Read the instructions completely, identify the parts and note the assembly sequence. Then use the fine sandpaper supplied to remove any sharp corners or edges.

Finishing the Wood

We recommend that the wood surfaces be waxed or oiled before assembly. This protects the wood from climatic changes and enhances the beauty of the wood.

For the Ultimate Finish

The Ashford Wax Finish will enhance the natural colour and beauty of the Beech timber.



To make assembly easier use candle wax on the screws.

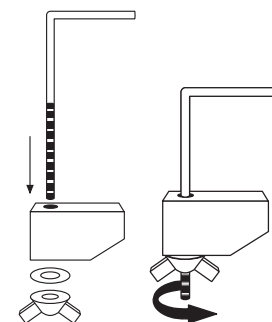
Assembly

1. Attach the base to the upright with 2 x 45mm (1³/₄") screws.
2. With the handle to the outside place the wheel onto the shaft and push the dome cap on.
3. Place the drive band around the wheel and spindle pulley. *NOTE:* Remove the drive band when not in use to avoid it stretching.
4. Apply a drop of oil occasionally to the tapered shaft bearings. *NOTE:* The Wheel is fitted with a ball bearing and doesn't need oiling.
5. Assemble the clamp as illustrated.
6. Clamp your boat shuttle bobbin winder to a bench or table.
7. Slide a bobbin onto the tapered shaft until tight.
8. Wind your yarn onto the bobbin.

Happy Weaving!

Other Ashford weaving accessories:

- Boat shuttle bobbins - available in packs of 10
- Boat shuttle 29cm (11¹/₂") includes 1 bobbin
- Boat shuttle 38cm (15") includes 1 bobbin



Clamps

BSBWW150921V5

Ashford Guarantee

Thank you for purchasing this Ashford product. In the unlikely event there is any fault in manufacture, please contact the dealer you purchased it from. To validate the guarantee, please go to www.ashford.co.nz/product-registration